



# MOONRAKER BEDS

---

Handcrafted beds from the heart of Wiltshire



## An Introduction to Moonraker Beds



**Since Moonraker Beds' inception in 2003, we have grown into one of the UK's leading independent mattress and bed suppliers. Based in Wiltshire, we handcraft our products for retail and contract clients across the UK as well as internationally. Our product range is 100% made in Britain and encompasses our passion for quality and service.**

We have explored virtually every available component in creating a mattress and divan collection to suit every preference for comfort and style. Our range takes advantage of new manufacturing technology whilst maintaining traditional hand tailoring techniques.

The majority of our mattress and divan technicians have over 20 years' experience. Combining this expertise with the best materials results in the top quality look and feel of our beds.

A host of divan options is available. Choose from reinforced platform top divan sets, reinforced platform top drawer divan bases, deep firm edge sprung divans (with or without storage), firm edge divans on legs, platform divans on legs, sliding doors or guest beds.

We also offer a zip & link facility on the majority of our range to allow two single divan sets to be joined together to create a bed up to 180cm (6'0) wide.

All divans and mattresses featured within this catalogue conform to the low hazard requirement of British Standard BS7177:2008, Source 0,1.

Aside from the regular sizes we have the capability to manufacture a whole host of special and bespoke products. If there is something you need, which is not illustrated within this brochure, please contact your stockist.

All our products are handcrafted to order, essentially making every bed an original to suit you and your home. We also have one of the fastest delivery services for beds in the UK - please ask your stockist for details.



## Mattress Spring Systems

Our range encompasses a choice of spring systems.

Choose from our pocket sprung units, with a choice of spring counts and two firmnesses: standard or ortho, to our exclusive *Gemini* triple framed spring system, our MB212 standard firm open coil spring system or our MB245 extra firm open coil spring system.

All spring units have edge to edge bracing and full rod edge support. Edgemaster side support springs can be added to most spring systems to fully reinforced the mattress sides and ends.

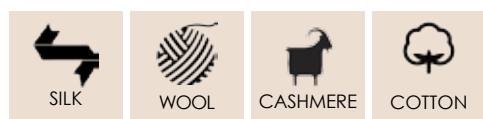
Flag stitched handles make turning and transporting your mattress easier. These are included on many models.

Most mattresses should be turned regularly to ensure even levels of comfort and support. Some mattresses just need rotating - look out for the *No Turn* icon.



## Materials

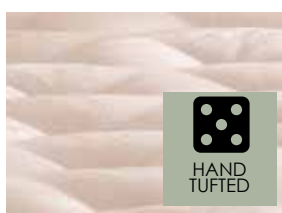
Our mattresses are made in Britain from the best-quality natural fillings which are hand teased or blended then layered upon springs.



## Finishing

Our top and bottom mattress covers are held in place by hand tufting, micro quilting or deep quilting.

Tufting is the traditional method of driving tufts through the mattress and securing them top and bottom, resulting in 'pockets' of fillings. Quilting involves stitching the cover to the filling and can provide a softer finish.



## Bed Sizes

We manufacture mattresses and divan bases across a spectrum of sizes. Standard UK bed sizes are below.

We can also manufacture bespoke products to non-standard sizes. Contact your stockist with your specific requirements.

	Metric size (cm)	Imperial size (feet)
Small single	75 x 190	2'6 x 6'3
Single	90 x 190	3'0 x 6'3
Small double	120 x 190	4'0 x 6'3
Double	135 x 190	4'6 x 6'3
King	150 x 200	5'0 x 6'6
King (zip & link)	150 x 200	5'0 x 6'6
Zip & link	180 x 190	6'0 x 6'3
Super king (linked divans)	180 x 200	6'0 x 6'6
Super king (zip & link)	180 x 200	6'0 x 6'6

**i** We continually seek improvements to our designs and specifications and reserve the right to amend specifications, prices and cover designs with or without prior notice. Actual colour of product may vary slightly from our illustrations due to the limitation of colour printing. All spring counts in this brochure are based on the model sized at 150cm x 200cm.

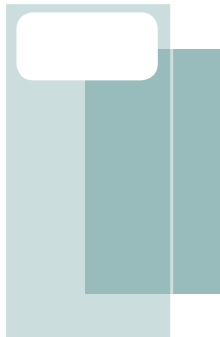
## Storage Options

Our beds have a choice of storage options with both a platform top or deep firm edge spring divan base. All drawers are beech laminated, fitted with easy glide metal runners and are upholstered to match the divan base.

Sliding door storage is also available, as illustrated on the Florida and Oxted models (page 40).



2 drawer single divan



1 large side drawer single divan



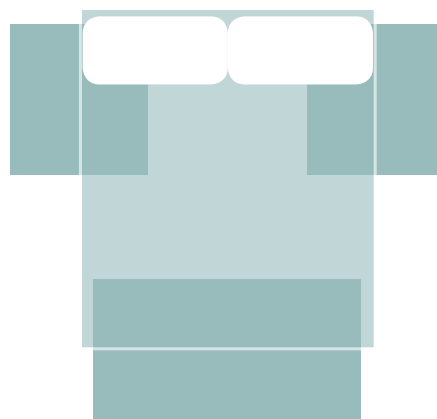
2 drawer double divan



1 sided 2 drawer double divan



End drawer double divan  
(not available on small  
doubles/120cm width)



Double size 3 drawer  
(not available on small  
doubles/120cm width)



4 drawer double divan with  
continental drawers (designed for  
use with bedside cabinets)



4 drawer double divan

Sovereign and Grand Elite collection divans are fitted with chrome glides as standard. Other ranges have castors as standard, but glides are available for laminate or wooden flooring. Please specify if required at the time of ordering.

All divans are built with increased levels of reinforcement. Our frames are built to withstand the rigour of use using selected softwood and hardwood timbers. All double size divans are in two halves for ease of handling.





# *The Sovereign Collection*

**The Sovereign collection consists of five high-quality handcrafted products. With at least 2000 count pocket sprung units, all Sovereign collection mattresses are packed full of luxurious layers of wool, cashmere and silk, and upholstered with exclusive soft feel covers.**

The collection comes with a choice of coordinating divans in quality chenilles, suedes and faux leathers. Our Antonio and Oblong headboards in matching fabrics are available to complete the designer look. See pages 42-43 for choices.

Divans in the Sovereign collection are fitted with chrome glides as standard. If you prefer the more traditional castor this should be specified at time of order.

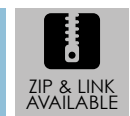


## BARONESS 3800

**The Baroness 3800 spring count is a luxury handcrafted mattress filled with sumptuous layers of polycotton, wool, cotton, cashmere and silk under the highest quality Belgian jacquard damask. Baroness 3800 features a multi-layer pocket sprung system, incorporating soft-tech springs, for the ultimate no turn mattress.**

The mattress has a tack and jump micro quilted finish with fluted and side stitched borders. Flag stitch handles and breather vents are fitted as standard.

*Photographed: 150x200cm continental 4 drawer divan set in Olive chenille with matching Antonio headboard.*





## VISCOUNT 3000

**The Viscount 3000 spring count is luxuriously filled with polycotton, blended wool, cashmere & silk upholstery under an elegant super-soft feel damask. The multi-layer pocket sprung system incorporates soft-tech springs on either side of the mattress.**

The mattress has a high loft micro-quilted finish and the borders are fluted and side stitched. Edgemaster springs, flag stitched handles and breather vents are fitted as standard.

*Photographed: 135x190cm 3 drawer divan set in Aqua chenille with matching Oblong headboard.*





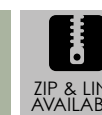


## ARISTOCRAT 2800

**A deluxe 2800 spring count pocket mattress, Aristocrat 2800 is filled with polycotton, blended wool, cashmere and silk upholstery under the highest quality Belgian jacquard damask.**

The Aristocrat 2800 is hand tufted with fluted and side stitched borders, flag stitched handles and breather vents.

*Photographed: 150x200cm reinforced platform set in Westbury Blue chenille with matching Antonio headboard.*







## EMPEROR 2400

**Emperor 2400 features our 2400 double layer pocket sprung unit, with soft-tech spring layer and Edgemaster support. The Emperor features polycotton, wool, cashmere and silk upholstery under a striking embossed and woven Marcella fabric.**

The mattress is hand tufted with fluted contrasting Charcoal chenille borders, flag stitched handles and breather vents.

*Photographed: 135x190cm 2 drawer set in Charcoal chenille with matching Oblong headboard.*



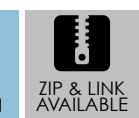
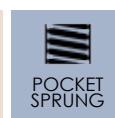


## COUNTESS 2000

**Countess 2000 features a double layer pocket sprung system, with soft-tech and fitted with Edgemaster springs. This no turn mattress contains luxurious polycotton, blended wool, cashmere and silk, and is covered with an exclusive Belgian jacquard.**

The mattress has a zoned quilted finish, fluted and side stitched borders, flag stitched handles and breather vents.

*Photographed: 135x190cm 9" 4 drawer set in purple chenille with matching Antonio headboard.*





# The Grand Elite Collection

**A selection of handcrafted beds to suit all tastes, from the sumptuous Excelsior 1400 through to the splendour of Opulence.**

Each mattress within the Grand Elite collection comes with a choice of coordinating divans. See pages 42-43 for the wide range of divan colours and fabrics.

All divans within this collection are fitted with chrome glides as standard. If you prefer the more traditional castor this should be specified at time of order.

Headboards in matching fabrics are available.





## EXCELSIOR 1400

---

**Excelsior 1400 features our 1400 spring count pocket fitted with Edgemaster springs. This hand tufted mattress contains luxurious wool blended with manmade fibres and polycotton under a highest quality soft feel knitted fabric with contrasting damask borders.**

*Photographed: 135x190cm reinforced deep platform set in coordinating Anthracite damask with a matching Oblong headboard.*







## MONACO 1000

---

**Monaco 1000 is our softest feel pocket sprung model. The mattress features a 1000 spring count pocket sprung system with layer upon layer of supersoft fillings, including blended wool, and a luxury damask fabric with tack and jump quilting.**

Edgemaster springs are available as an optional extra.

*Photographed: 135x190cm Deep Firm Edge set in Cool Grey with matching Oblong headboard.*





## SHERWOOD

---

**The Sherwood bedstead is a reinforced shallow height divan on glides to assist moving the bed. The bed comes with or without storage, complete with panelled head end and plain footboard in a choice of colours.**

Suitable for use with any Moonraker mattress.

For full details of available divan colours please see page 42-43.

*Photographed: 135x190cm 9" 4 drawer Sherwood bedstead in Westbury Black chenille with Monaco 1000 mattress.*



## ZURICH

---

**The Zurich set features our exclusive Gemini spring system with triple rod edge side support. Covered with an attractive, high quality woven damask, the hand tufted mattress has flag stitched turning handles as standard.**

The contrasting damask divan is available in a choice of colours. Please see page 42-43.

*Photographed: 135x190cm 4 drawer divan set in Beige with Oblong headboard in Brown faux leather.*







## OPULENCE

**Opulence features our MB245 extra firm spring unit coupled with layer upon layer of luxury upholstery under a high quality woven knitted fabric top.**

The Opulence is hand tufted and the fluted borders are fitted with flag stitch handles and breather vents as standard. The contrasting damask divan is available in a choice of colours.

*Photographed: 135x190cm 4 drawer divan set, in Black Diamond damask with a matching Oblong headboard.*







# THE LUXURY COLLECTION

**The Luxury collection encompasses all that Moonraker Beds is renowned for. From pocket sprung and our Gemini spring systems to our MB212 and MB245 extra firm spring systems, they can all be found within this collection.**

**Covered in a breadth of luxury damasks and soft knits, including those manufactured using natural Bamboo yarn, the Luxury collection offers something for everyone.**



## The Benefits of Bamboo

Bamboo, from the grass family of Gramineae, is abundant in warm or tropical and subtropical regions.

Bamboo thrives naturally without the need for pesticides. It is a 100% natural cellulose fibre which is converted into yarns without the addition of chemicals and it's 100% biodegradable in soil, causing no pollution to the environment.

Repeated tests have proven Bamboo fibre has strong durability, stability and tenacity. The thinness and whiteness of bamboo fibre is similar to classic viscose.

Bamboo fibre has the following advantages:

- It has a light texture as well as being naturally anti-bacterial.
- The fabric instantly absorbs moisture and dries quickly, thus helping the body breathe.
- Being hypo-allergenic, Bamboo mattress ticking keeps its comfort even after many years.
- It has a soft touch and bright look, leaving a refreshing feeling.

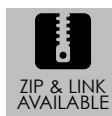


## BAMBOO 1000

**Bamboo 1000 features a 1000 spring count pocket sprung system with layer upon layer of deluxe fillings, under a soft feel knitted fabric incorporating bamboo yarn.**

The mattress and divan borders are upholstered in Beige faux suede. Edgemaster springs available as an optional extra.

*Photographed: 180x190cm large side drawer set Zip & Link in Beige suede with matching Oblong headboard.*



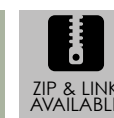


## STOCKHOLM 1000

**The Stockholm 1000 features our 1000 count pocket sprung system with extra deep hypoallergenic comfort layer under a damask cover.**

The mattress has a computer designed high-loft quilt pattern and the fluted border has flag stitched handles and breather vents fitted as standard.

*Photographed: 135x190cm reinforced platform set in Cool Grey with contrasting Oblong headboard in Gunmetal.*







## WASHINGTON 1000

**The Washington 1000 features our 1000 count pocket sprung system with extra deep hypoallergenic comfort layer under a damask cover.**

The mattress is hand tufted and the fluted border has flag stitched handles and breather vents fitted as standard.

*Photographed: 135x190cm large end drawer set in Gunmetal with matching Oblong headboard.*







## BAMBOO GEMINI

**Bamboo Gemini features our exclusive Gemini spring system with triple rod edge side support and layer upon layer of quality fillings under a soft feel knitted fabric incorporating bamboo yarn. The mattress and divan borders are upholstered in beige faux suede.**

See page 17 for benefits of natural bamboo yarn.

*Photographed: 135x190cm continental 4 drawer set, in Beige suede with matching Oblong headboard.*





## CANBERRA

Canberra is the softest model within our range. The MB212 spring system is coupled with multiple layers of super soft polyester and polycotton upholstery. The mattress has hand tufted panels and is covered in a *natural touch* soft knit panel with contrasting damask borders and complementary brown handles & edging.

Edgemaster springs are available as an optional extra.

*Photographed: 135x190cm 2 drawer set, in Canberra brown with matching Oblong headboard.*





## MARSEILLE

Featuring our MB245 spring system, Marseille is upholstered with extra deep polyester upholstery under a woven damask ticking. The mattress is hand tufted with fluted borders, flag stitched handles and breather vents.

Edgemaster springs available as an optional extra.

*Photographed: 135x190cm 6" Platform set, on optional chrome legs, in Shimmering Blue with matching Oblong headboard.*



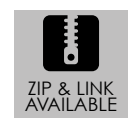


## ST TROPEZ

**St Tropez features our MB245 spring system and is upholstered with extra deep filling under a woven damask ticking. The mattress panels are deep quilted in a stunning high-loft bubbles quilt pattern. The mattress borders are fitted with flag stitch handles and breather vents as standard.**

Edgemaster springs available as an optional extra.

*Photographed: 135x190cm 9" 4 drawer divan set, in Shimmering Blue with matching Oblong headboard.*







# THE MEMORY COLLECTION

Originally created by NASA, memory foam was first used in mattress production in the early 1990s. Our range today incorporates memory foam in combination with our pocket sprung systems, with our MB212 or as a full foam interior.

We use generous amounts of memory foam in combination with a reflex foam support for added durability and comfort.

## The Benefits of Aloe Vera

Aloe Vera has been known and used by many cultures for centuries for its natural properties. Its healing properties were discovered by the Ancient Egyptians thousands of years ago. Widely used in the cosmetic and drug industry, Aloe Vera is now available within the textile industry. Aloe Vera's characteristics are now available for daily use with our Viscotek model.

Aloe Vera:

- Maintains the skin's natural balance.
- Gives a feeling of comfort to the skin.
- Adds a soft touch and shine to the fabric.
- Is a solution for hectic daily life stress as well as fatigue.





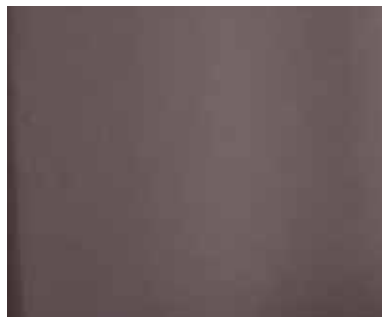
## MEMORY SUPREME

**Memory Supreme is a striking pocket sprung mattress with Euro-Top detail. The micro quilted top contains Maxicool fabric to help disperse body heat.**

The fluted borders are fitted with contrasting flag stitch handles and breather vents as standard.

*Photographed: 135x190cm deep firm edge sprung divan set in Anthracite with matching Oblong headboard.*





## VISCO 1000

**Visco 1000 features a visco elastic memory foam and reflex foam upholstery layer in combination with a 1000 spring count pocket sprung system. An elegant embossed soft feel knitted panel adorns the sleeping surface of the mattress.**

Edgemaster springs available as an optional extra.

*Photographed: 135x190cm large end drawer set in Gunmetal with matching Oblong headboard.*







## MEMORY 1000

**Memory 1000** features visco elastic memory foam and reflex foam upholstery layers in combination with a 1000 spring count pocket sprung system. The mattress is hand tufted, with fitted borders, flag stitch handles and breather vents.

Edgemaster springs available as an optional extra.

*Photographed: 135x190cm reinforced platform set in Cool Grey with contrasting Oblong headboard in Shimmering Blue.*

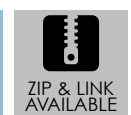




## VISCODELUXE

**Viscodeluxe is a full foam mattress incorporating reflex foam and memory foam. The mattress has a quilted Maxicool cover to assist in heat dispersal.**

*Photographed: 135x190cm reinforced platform set, in Anthracite with matching Oblong headboard.*





## VISCOTEK

The Viscotek features our MB212 open coil spring system in combination with visco elastic memory foam and reflex foam, under a straight line micro quilted knitted cover infused with Aloe Vera.

Edgemaster springs available as an optional extra.

See page 25 for benefits of Aloe Vera yarn.

*Photographed: 135x190cm 6" platform set with optional Chrome legs, in Shimmering Blue with matching Oblong headboard.*







# THE ORTHO COLLECTION

**The Ortho Collection is ideal for those who prefer a firmer feel to their mattress.**

This range of luxury products incorporates either our Ortho pocket spring system or our MB245 Extra Firm spring system. The use of different fillings allows us to create a multitude of firmnesses.

As with all our ranges, we offer a wide breadth of divan options with every model.



## WILTSHIRE 1000 FIRM

**Wiltshire 1000 Firm is an Ortho pocket sprung hand tufted mattress in a striking grey and white stripe Belgian damask with contrasting grey borders.**

Edgemaster springs available as an optional extra.

*Photographed: 135x190cm reinforced platform set, in Wiltshire grey with matching Oblong headboard.*





## CASABLANCA

---

The Casablanca is one of our most popular models. The Casablanca features our MB245 spring system, upholstered with multiple layers under a woven damask hand tufted panel. The mattress and divan have coordinating borders, removing the need for valances.

Edgemaster springs available as an optional extra.

*Photographed: 135x190cm continental 4 drawer set, in Canberra brown, with matching Oblong headboard.*







## PALERMO ORTHO

---

**Palermo Ortho is the firmest hand tufted model in our range. Extra deep layers of upholstery are used in conjunction with our MB245 spring system to create this extra firm mattresses.**

Edgemaster springs available as an optional extra.

*Photographed: 135x190cm 4 drawer set, in Nordin Grey with matching Oblong headboard.*



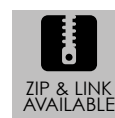


## SORRENTO ORTHO

**Sorrento Ortho is the firmest quilted model in our range. Extra deep layers of upholstery are used in conjunction with our MB245 spring system to create an extra firm feel.**

Edgemaster springs available as an optional extra.

*Photographed: 135x190cm 4 drawer set, in Nordin grey with matching Oblong headboard.*





## OSLO ORTHO

Oslo Ortho is one of our most popular models and offers a firm, but comfortable, level of support. The mattress is covered with a traditional striped damask ticking with a plain contrasting damask on the divan bases. The mattress is hand tufted and fitted with flag stitched handles.

Edgemaster springs available as an optional extra.

*Photographed: 90x190cm full length guest bed set incorporating a 90x190cm underbed and mattress with an Oblong headboard in Brown faux leather.*







## MEMPHIS

---

**Memphis features our MB245 extra firm spring system in combination with heavyweight polyester upholstery. Covered in damask, the mattress has a traditional deep quilted finish.**

Edgemaster springs available as an optional extra.

*Photographed: 135x190cm 2 drawer divan set with Oblong headboard, in Beige faux suede.*





# The Classic collection

**Offering total versatility and a wide breadth of options, the Classic collection offers excellent value, a quality specification and great looks.**

From the stylish Houston through to the Jakarta, lies a specification and firmness to suit every budget and taste.

The collection incorporates our MB212 spring systems, all with full rod edge support, in a wide array of specifications from hand tufted to deep quilted. The Oxted features an exclusive extra slim MB212 spring system for a low depth, high specification mattress. All hand tufted models have felt collars and every model features a woven damask fabric as standard.



## HOUSTON

The Houston features our MB212 medium firm spring system with generous upholstery layers and a quality damask ticking. The mattress is hand tufted and the fluted borders are fitted with flag stitched handles as standard. As with all our models, the Houston is available with a multitude of divan options.

Edgemaster springs available as an optional extra.

*Photographed: 90x190cm set, with oblong headboard in black faux leather, top: with large side drawer base, bottom: 6" platform divan.*



## TEXAS

The Texas features a medium firm spring interior with luxury soft fillings, resulting in fantastic levels of support and comfort. The mattress is deep quilted using a geometric clouds quilting pattern. Flag stitched handles are fitted as standard.

Edgemaster springs available as an optional extra.

*Photographed: 90x190cm set, with oblong headboard in black faux leather, top: with large side drawer base, bottom: 6" platform divan with optional chrome legs.*







## FLORIDA

---

**The Florida features our MB212 spring system and is packed with heavyweight polyester upholstery.**

Covered in an attractive gold damask with deep quilted finish, Florida is available with a host of divan options.

Edgemaster springs available as an optional extra.

*Photographed: 135x190cm end sliding door set, with Oblong headboard in Beige faux suede.*



## OXTED

---

**The Oxted features our extra slim MB212 spring system and is packed with heavyweight upholstery. At only 15cm deep, the Oxted is a popular choice for use on bunk beds and wooden framed guest beds. Covered in an attractive white damask with a deep quilted finish, Oxted is available with a choice of divans.**

*Photographed: 90x190cm sliding door divan set, in Nordin grey with matching Oblong headboard.*





## JAKARTA

---

**Jakarta features our MB212 spring system (with full rod edge support) and generous upholstery layers. Covered in a woven damask ticking the mattress has a traditional deep quilted finish.**

Edgemaster springs available as an optional extra.

*Photographed: 90x190cm guest bed set, incorporating a 90x175cm underbed and mattress with matching Oblong headboard.*



## Coordinating divan colours

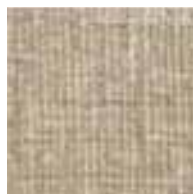
**At night, a place of luxury... By day, a thing of beauty.**

Our coordinating fabrics, shades and designs give you the freedom to choose the right look for your mattress and divan to suit you and your home.

### Chenille



Natural



Stone



Zinc



Silver grey



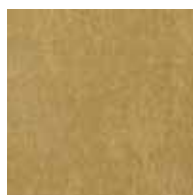
Westbury Black



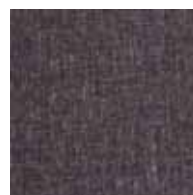
Westbury Blue



Aubergine



Olive



Charcoal



Brown



Purple



Sand



Aqua



## Faux suede



Tan



Charcoal



Beige

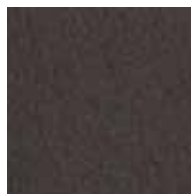
## Faux leather



Brown



Cream



Black

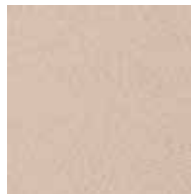
## Plain damask



Cool Grey



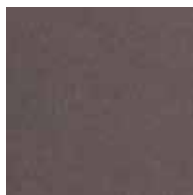
Anthracite



Beige



Black  
Diamond



Gunmetal



Canberra  
Brown



Shimmering  
Blue



Wiltshire Grey



Grand Elite  
Cream

Available in every size, our stylish headboards can be upholstered in a matching or contrasting fabric to your divan.

## Antonio



Available in chenille, suede and leather.

## Oblong



Available in chenille, suede, leather and damask.



## **MOONRAKER BEDS**

Units 2-5 Broadway House  
Headquarters Road  
West Wilts Trading Estate  
Westbury, Wiltshire BA13 4JR

**T** 01373 825900 **F** 01373 825901  
[sales@moonrakerbeds.com](mailto:sales@moonrakerbeds.com)

[www.moonrakerbeds.com](http://www.moonrakerbeds.com)